



TSL Control



Audio. Control. Power.

# TallyMan Redundancy Package

Offering a seamless experience for broadcasters seeking reliable and consistent system operations, TallyMan Redundancy Package adds protection from unforeseen events and provides auto-failover for uninterrupted performance during times of maintenance.

## FEATURES

- (>) Virtual IP addresses to allow for communication across the redundant system using shared virtual IP addresses to create a single point of contact for all system and 3rd party devices.
- (>) Auto-failover from primary to backup system controllers with manual return to primary state.
- (>) Configurations and live updates auto synced across primary and backup system controllers.
- (>) Dedicated Redundancy control panel (TMRP), gives real-time status and redundancy management from a local or remote location.
- (>) Manual control over redundancy activity allowing for easy maintenance and support from the TMRP.

## SYSTEM BEHAVIOUR

### AUTO-FAILOVER

- (>) Occurs from primary to backup system controllers with manual return required to make the primary active again.
- (>) Once the system is armed using auto failover mode, the backup unit will monitor the health of the primary.
- (>) In the event of an interruption to service either internal or external such as loss of network communications or power, the backup will become active and take control of the system whilst ensuring the primary is deactivated, even in the most extreme circumstances.
- (>) Returning the primary to being the active controller is a manual operation to prevent the possibility of a failover cycle between the primary and backup units.



### MANUAL CONTROL

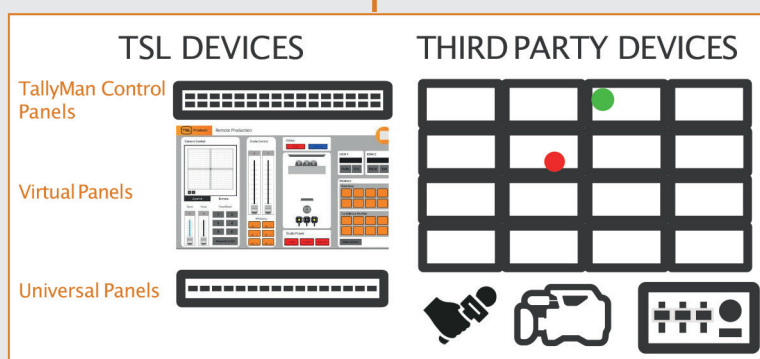
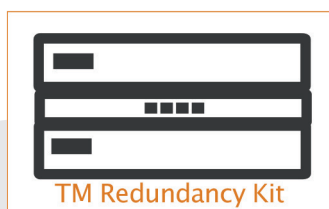
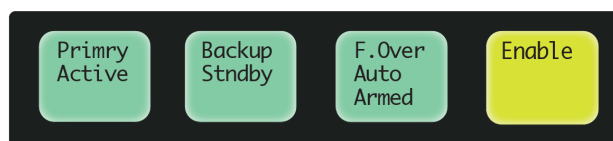
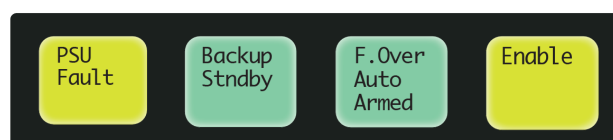
- (>) Allowing for easy maintenance and support from the TMRP.
- (>) Once the systems failover mode has been set to manual, a user has the option to decide which of the system controllers they want to be active.
- (>) This option can be used to for routine testing or maintenance of a system controller to continue to provide functional operations with the system without any disruption to regular production.



## SYSTEM INTERFACES

### DEDICATED REDUNDANCY CONTROL PANEL (TMRP)

- (>) Gives real-time status and redundancy management from a local or remote location.
- (>) The TMRP can be located anywhere where it is needed, all it needs is a network connection. In fact, it can also be powered using PoE so no PSU is required, or both can be used to provide a redundant power supply.
- (>) Up to eight TMRP units can be used to monitor and control the redundancy setup.
- (>) Status of both the primary and backup system controllers is provided, which unit is active, if there is a PSU failure as well as the current failover mode.
- (>) Controls include switching the failover mode between auto and manual, changing the current active unit or in the event of an issue a system controller can be remotely restarted.
- (>) The TMRP is provided with a 1RU mounting bracket for convenience.



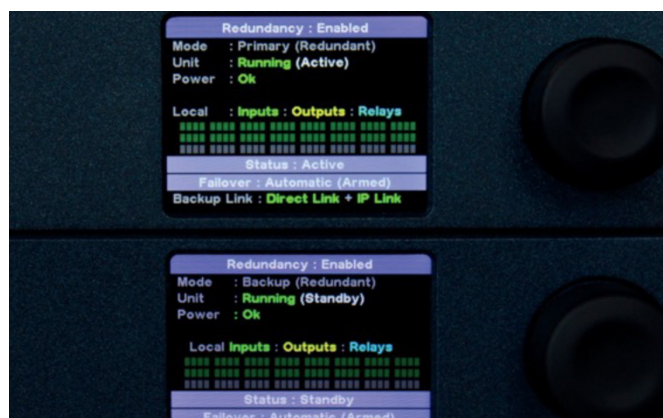
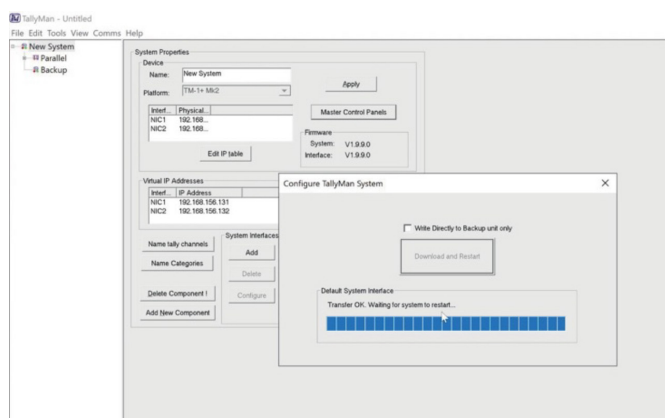
### VIRTUAL IP ADDRESSES

- (>) Allow for communication across the redundant system using shared virtual IP addresses to create a single point of contact for all system and 3rd party devices.
- (>) The virtual IP addresses (one per NIC) automatically switch to the active system controller so that any device communicating with the Tallyman system can continue that communication in the event of a failover with minimal interruption.
- (>) The Tallyman Redundancy system also ensures that the virtual IP addresses can never be active on more than one unit eliminating the possibility of duplicate virtual IP addresses on the network.

## CONFIGURATIONS AND LIVE UPDATES

### AUTO SYNCED ACROSS PRIMARY AND BACKUP SYSTEM CONTROLLERS.

- (>) A system configuration is only required to be written to the primary controller.
- (>) Once the configuration is loaded and the primary active, it will then pass the configuration over to the backup controller to ensure all configured elements are mirrored across both units.
- (>) Any changes in status, such as a relay closure or router cross-point are synchronised to the backup controller automatically to ensure that in the event of a failover the backup is always in the correct state to resume operations.



### KEY COMPONENTS

**Primary and backup TM1-Mk3+controllers** – with dedicated link cable to connect the two units.

**TMRP** – Dedicated redundancy management panel.



### ORDERING INFORMATION

Ordering Code	Description
TM-RED-PKG	2x TM1-Mk3+ and Tallyman redundancy kit.
TM-RED-KIT	TallyMan Redundancy Kit - Includes 2x redundancy licences, direct link cable and TMRP (with 1RU mounting bracket). Note: Requires 2x TM1-Mk3+ units, not included.

E. enquiries@tslproducts.com T. +44 1628 564 610 T. +1 818 898 3380

tslproducts.com



Audio. Control. Power.