

# Connecting a Blackmagic Design ATEM Production Switcher to TallyMan

**Contact TSL Products Support:**

**E.** [Support@tslproducts.com](mailto:Support@tslproducts.com)

**T.** +44 (0) 01628 564 610

**W.** [www.tslproducts.com](http://www.tslproducts.com)

## Version History

Issue	Date	Change Details
1	10/10/18	First Issue

# Contents

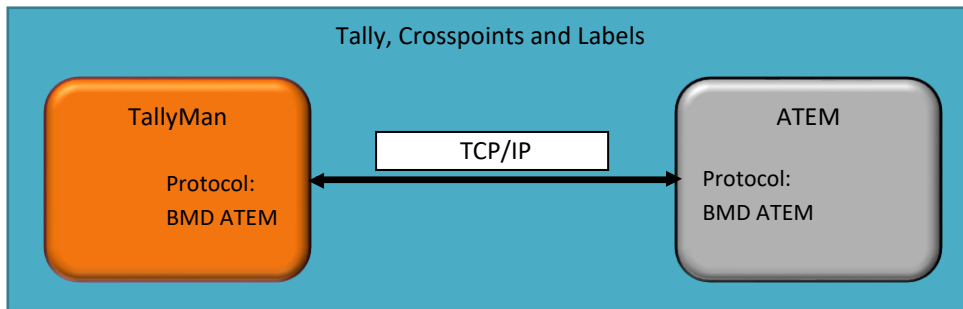
---

Overview.....	4
Functions .....	4
Tally and Crosspoints .....	5
Comms.....	5
1.    Screenshots .....	5
2.    Detail .....	6
Instructions.....	6
1.    Find IP address of ATEM mainframe .....	6
2.    Adding Preview Tally .....	7
3.    Using the Second Tally Level to Trigger Cut, Auto and Fade to Black Transition Functions .....	7

## Overview

### Functions

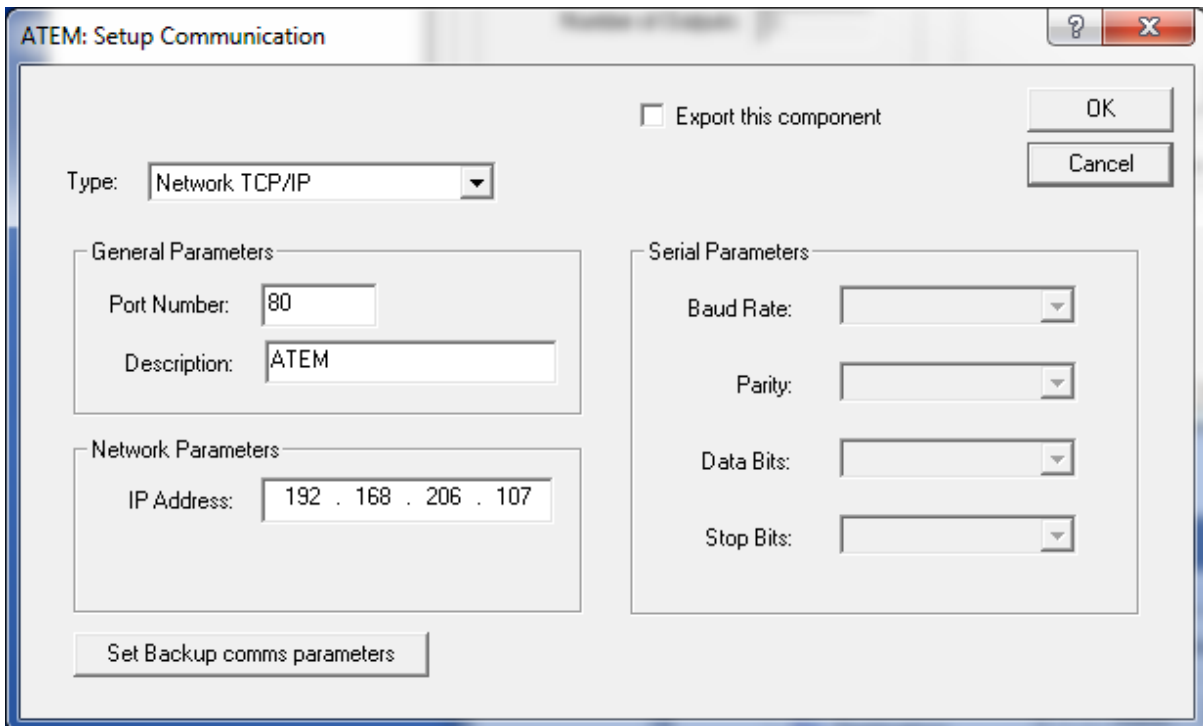
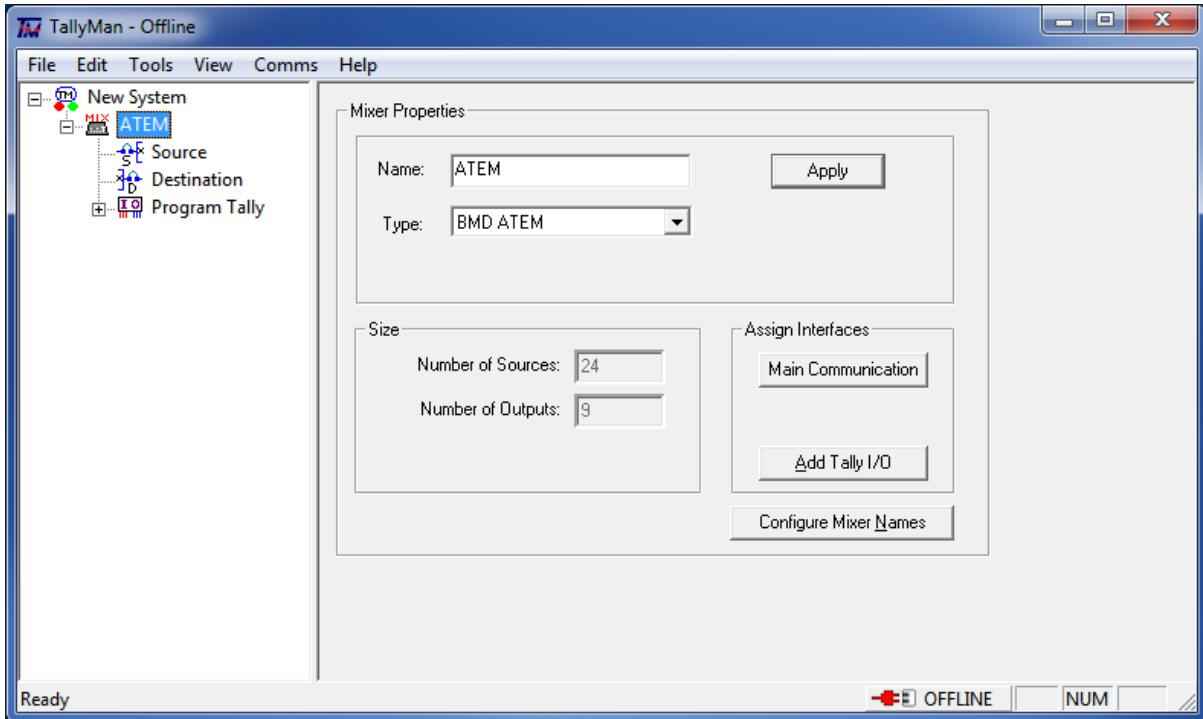
- Tally: From Mixer to TallyMan
  - 2 Tally Levels
- Crosspoints: from Mixer to TallyMan
- Labels: from TallyMan to Mixer



# Tally, Labels and Crosspoints

## Comms

### 1. Screenshots



## 2. Detail

### Protocol

- Protocol name in TallyMan: BMD ATEM

### Connection

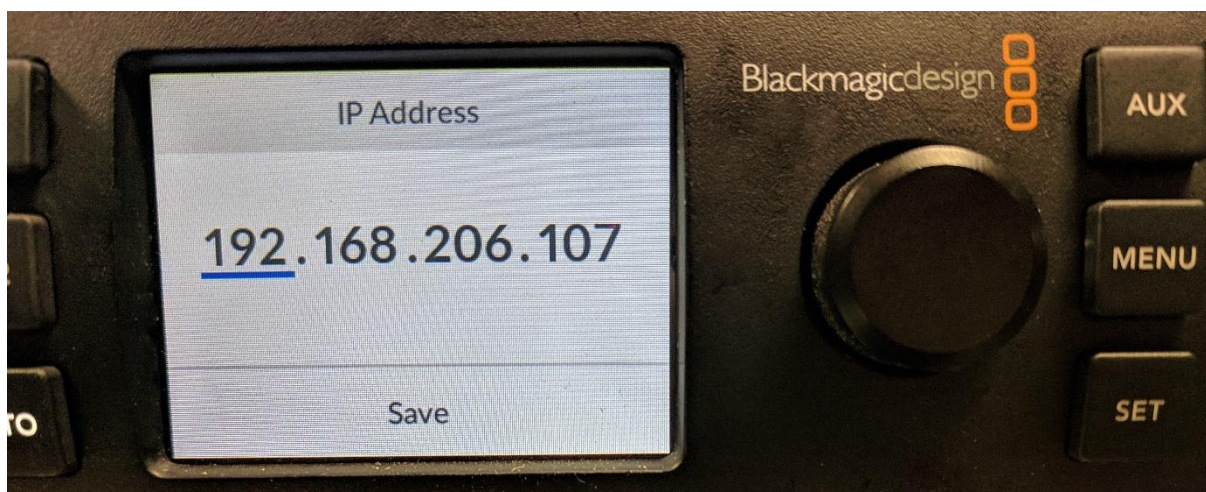
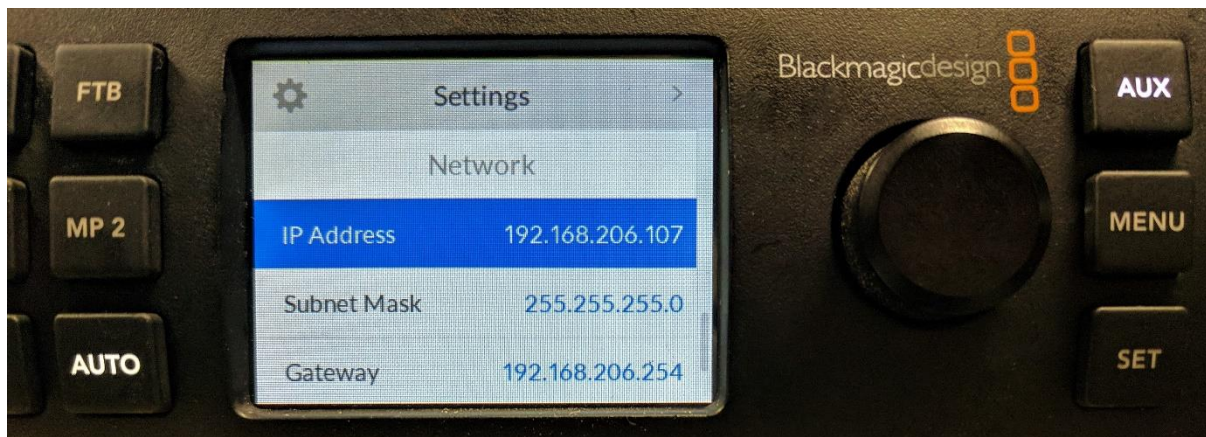
- Comms: TCP/IP
- Default Port: 80
- Component Type in TallyMan: Mixer
- Third party interface required: None

## Instructions

To begin connecting Tallyman to a Blackmagic ATEM, both devices must be powered on and connected to the network. TallyMan connects to the ATEM mainframe.

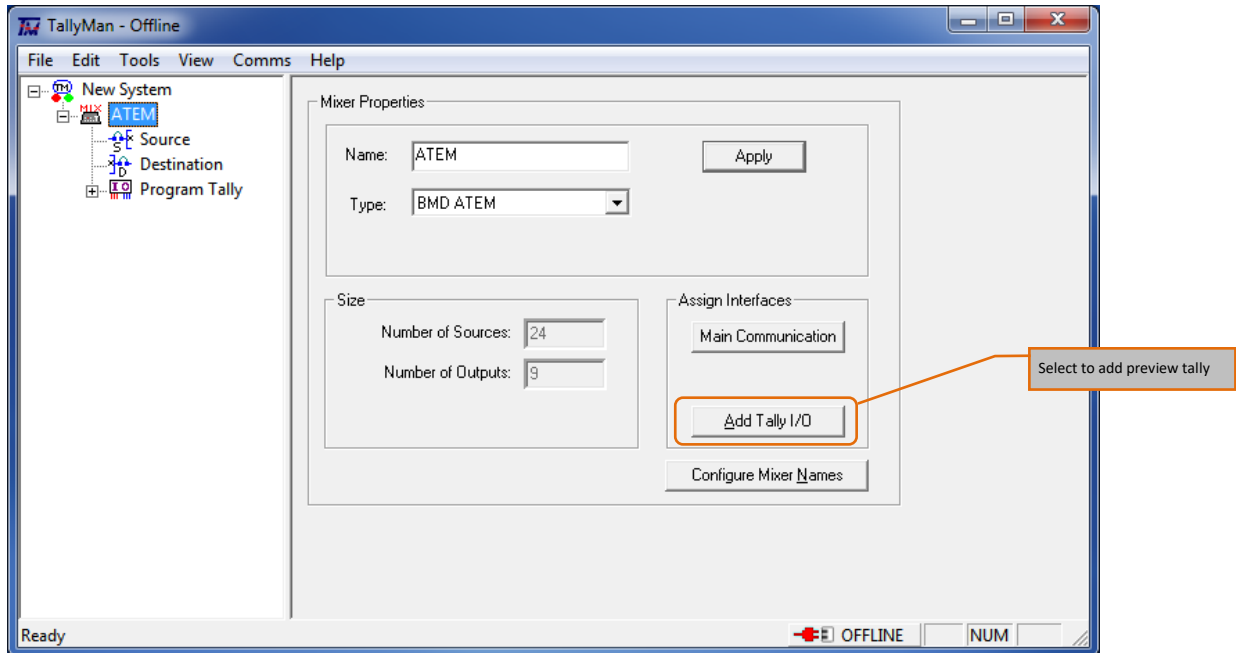
### 1. Finding the IP address of the ATEM mainframe

The IP of the ATEM can be viewed and changed from the settings page of the front panel menu using the encoder.



## 2. Adding Preview Tally

Select "Add Tally I/O" to add a second level of tally.



## 3. Using the Second Tally Level to Trigger Cut, Auto and Fade to Black Transition Functions

Adding tally outs to the second tally level provides control of Cut, Auto and Fade to Black, this allows an operator to affect this functionality from anywhere in the facility and using which ever trigger they see necessary via TallyMan.

**Tally Out 1 = Cut, Tally Out 2 = Auto Fade, Tally Out 3 = Fade To Black**

