

RELEASE NOTES



Product	Version	Release Date
MPA1 Mix and Solo Products	2.0C	21/2/2019
MPA1 Mix and Solo Products	2.0A	29/1/2019
MPA 1 Mix and Solo Products	1.2.9	5/3/2018
MPA 1 Mix and Solo Products	1.2.8	14/11/2017
MPA 1 Mix and Solo Products	1.2.7	28/7/2017
MPA1 Mix and Solo Products	1.2.6	30/6/2017

RELEASE NOTES



Contents

- Overview 3
- New Features and Enhancements 4
- New Features and Enhancements (contd.)..... 6
- Known Limitations 12
- Known Limitations (contd.)..... **Error! Bookmark not defined.**
- Bug Fixes 19
- Bug Fixes (contd.)..... **Error! Bookmark not defined.**
- Upgrade Procedure for all MPA1 devices. 23
- Upgrade Procedure (for DANTE enabled MPA1 devices only) 24
- Upgrade Procedure (for DANTE enabled MPA1 devices only) contd. 25
- Technical Support 27

RELEASE NOTES



Overview

MPA1 Release 2.0C fixes a number of bugs in the 2.0A release. MPA1 Release 2.0A was a major release and contains a number of new features, enhancements and bug fixes.

This release is only applicable for the following products:

MPA1 SOLO SDI	MPA1 MIX SDI
MPA1 SOLO MADI	MPA1 MIX MADI
MPA1 SOLO DANTE	MPA1 MIX DANTE
MPA1 SOLO 8	MPA1 MIX 8

Please note that some features, enhancements and bug fixes may not be applicable to all models.

RELEASE NOTES



New Features and Enhancements

Version 2.0C

No new features only bug fixes.

RELEASE NOTES



Version 2.0A

MPA1 SOLO SDI

- Balanced Line Outputs can now be set to 'Fixed' or 'Variable' Output mode
- New 'Virtual GPI' Mode, allowing remote selection of DIM, CUT and Channel Selection
- Asynchronous AES sources now supported
- AES sources sampled at 44.1kHz now supported
- Improved Webpage, including Virtual GPI monitoring and configuration

MPA1 MIX SDI

- Balanced Line Outputs now be configured to 'Fixed' or 'Variable' Output Mode.
- New 'Virtual GPI' Mode, allowing remote selection of DIM, CUT, MIX and Channel Selection
- Asynchronous AES sources now supported
- AES sources sampled at 44.1kHz now supported
- Improved Webpage, including Virtual GPI monitoring and configuration

MPA1 SOLO DANTE

- Balanced Line Outputs can now be set to 'Fixed' or 'Variable' Output mode
- New 'Virtual GPI' Mode, allowing remote selection of DIM, CUT and Channel Selection
- New additional multi-channel display mode
- Improved Webpage, including Virtual GPI monitoring and configuration

MPA1 MIX DANTE

- Balanced Line Outputs now be configured to 'Fixed' or 'Variable' Output Mode.
- New 'Virtual GPI' Mode, allowing remote selection of DIM, CUT, MIX and Channel Selection
- Improved Webpage, including Virtual GPI monitoring and configuration

New Features and Enhancements (contd.)

MPA1 SOLO MADI

- Balanced Line Outputs can now be set to 'Fixed' or 'Variable' Output mode
- New 'Virtual GPI' Mode, allowing remote selection of DIM, CUT and Channel Selection
- New additional multi-channel display mode
- Improved Webpage, including Virtual GPI monitoring and configuration

MPA1 MIX MADI

- Balanced Line Outputs now be configured to 'Fixed' or 'Variable' Output Mode.
- New 'Virtual GPI' Mode, allowing remote selection of DIM, CUT, MIX and Channel Selection
- Improved Webpage, including Virtual GPI monitoring and configuration

MPA1 SOLO 8

- Initial Release for MPA1 SOLO 8

MPA1 MIX 8

- Initial Release for MPA MIX 8

RELEASE NOTES



Version 1.2.9

MPA1 SOLO SDI

- N/A

MPA1 MIX SDI

- N/A

MPA1 SOLO DANTE

- N/A

MPA1 MIX DANTE

- N/A

MPA1 SOLO MADI

- N/A

MPA1 MIX MADI

- N/A

RELEASE NOTES



Version 1.2.8

MPA1 SOLO SDI

- New Improved Audio Meter Display complete with Audio Phase Metering in addition to existing 16 Audio Level Meter Mode.
- New Balance/Pan Control

MPA1 SOLO DANTE

- New Improved Audio Meter Display complete with Audio Phase Metering
- New Balance/Pan Control

MPA1 MIX DANTE

- N/A

MPA1 SOLO MAD1

- New Improved Audio Meter Display complete with Audio Phase Metering
- New Balance/Pan Control

MPA1 MIX MAD1

- N/A

RELEASE NOTES



Version 1.2.8

MPA1 SOLO SDI

- New Improved Audio Meter Display complete with Audio Phase Metering in addition to existing 16 Audio Level Meter Mode.
- New Balance/Pan Control

MPA1 SOLO DANTE

- New Improved Audio Meter Display complete with Audio Phase Metering
- New Balance/Pan Control

MPA1 MIX DANTE

- N/A

MPA1 SOLO MAD1

- New Improved Audio Meter Display complete with Audio Phase Metering
- New Balance/Pan Control

MPA1 MIX MAD1

- N/A

RELEASE NOTES



Version 1.2.7

MPA1 SOLO SDI

- Support for 3G Level B Sources
- SDI Output connection now supported.
- Support for SNMP

MPA1 SOLO DANTE

- Support for SNMP

MPA1 MIX DANTE

- Support for SNMP

MPA1 SOLO MADI

- Support for SNMP

MPA1 MIX MADI

- Support for SNMP

RELEASE NOTES



Version 1.2.6.

MPA1 SOLO SDI

- Support for 480i and 576i SD-SDI formats now supported on MPA1 SOLO SDI
- HDMI Output now follows selected Input Source on MPA1 SOLO SDI
- HDMI Output now includes two channels of embedded audio from selected source on MPA SOLO SDI

MPA1 SOLO DANTE

- MPA SOLO DANTE products now supports AES-67 (Please see Page 10)
- MPA SOLO DANTE now appears as 'Receiver only' in Dante Controller

MPA1 MIX DANTE

- MPA MIX DANTE products now supports AES-67 (Please see Page 10)
- MPA MIX DANTE now appears as 'Receiver only' in Dante Controller

MPA1 SOLO MADI

- N/A

MPA1 MIX MADI

- N/A

RELEASE NOTES

Known Limitations

Version 2.0C

MPA1 SOLO SDI

- SD-SDI formats are displayed with an aspect ratio of 8:3
- 3G Level-B not supported on HDMI output
- SD-SDI formats not supported on HDMI output
- Auto Naming on Webpage not supported
- 'Select Page and Solo' Virtual GPI Not Supported

MPA1 MIX SDI

- SD-SDI formats are displayed with an aspect ratio of 8:3
- 3G Level-B not supported on HDMI output
- SD-SDI formats not supported on HDMI output
- Auto Naming on Webpage not supported
- +10dB and +20dB Preset Gains on Webpage not supported

MPA1 SOLO DANTE

- Auto Naming on Webpage not supported
- 'Select Page and Solo' Virtual GPI Not Supported

MPA1 MIX DANTE

- Auto Naming on Webpage not supported

MPA1 SOLO MADI

- Auto Naming on Webpage not supported
- 'Select Page and Solo' Virtual GPI Not Supported

RELEASE NOTES



MPA1 MIX MADI

- Auto Naming on Webpage not supported

MPA1 SOLO 8

- Auto Naming on Webpage not supported
- 'Select Page and Solo' GPI Not Supported

MPA1 MIX 8

- Auto Naming on Webpage not supported

RELEASE NOTES



Version 2.0A

MPA1 SOLO SDI

- SD-SDI formats are displayed with an aspect ratio of 8:3
- 3G Level-B not supported on HDMI output
- SD-SDI formats not supported on HDMI output
- Auto Naming on Webpage not supported
- 'Select Page and Solo' Virtual GPI Not Supported
- Audio metering is not displayed, and audio output muted with some SD-SDI sources
- A brief audio disturbance may be heard when switching between SDI Input 1 and SDI Input 2. This is most noticeable when switching between asynchronous SDI sources.
- When switching between sources where not all of the audio channels are used the previous sources audio can sometimes be heard in the unused channels.
- The audio level meters can sometimes jump +1 Db a few seconds after switching between SDI inputs.

MPA1 MIX SDI

- SD-SDI formats are displayed with an aspect ratio of 8:3
- 3G Level-B not supported on HDMI output
- SD-SDI formats not supported on HDMI output
- Auto Naming on Webpage not supported
- +10dB and +20dB Preset Gains on Webpage not supported
- Audio metering is not displayed, and audio output muted with some SD-SDI sources
- A brief audio disturbance may be heard when switching between Mix Pages. This is most noticeable when switching between asynchronous SDI sources.
- When switching between sources where not all of the audio channels are used the previous sources audio can sometimes be heard in the unused channels.
- The audio level meters can sometimes jump +1 Db a few seconds after switching between SDI inputs.

MPA1 SOLO DANTE

- Auto Naming on Webpage not supported
- 'Select Page and Solo' Virtual GPI Not Supported

MPA1 MIX DANTE

- Auto Naming on Webpage not supported

RELEASE NOTES



MPA1 SOLO MADI

- Auto Naming on Webpage not supported
- 'Select Page and Solo' Virtual GPI Not Supported

MPA1 MIX MADI

- Auto Naming on Webpage not supported

MPA1 SOLO 8

- Auto Naming on Webpage not supported
- 'Select Page and Solo' GPI Not Supported
- The audio level meters can sometimes jump +1 Db a few seconds after changing the AES input.

MPA1 MIX 8

- Auto Naming on Webpage not supported
- The audio level meters can sometimes jump +1 Db a few seconds after changing the AES input.

RELEASE NOTES



Version 1.2.8

MPA1 SOLO SDI

- SD-SDI formats are displayed with an aspect ratio of 8:3
- 3G Level-B not supported on HDMI output
- SD-SDI formats not supported on HDMI output

MPA1 SOLO DANTE

- N/A

MPA1 MIX DANTE

- N/A

MPA1 SOLO MADI

- N/A

MPA1 MIX MADI

- N/A

RELEASE NOTES



Version 1.2.7

MPA1 SOLO SDI

- SD-SDI formats are displayed with an aspect ratio of 8:3
- 3G Level-B not supported on HDMI output
- SD-SDI formats not supported on HDMI output

MPA1 SOLO DANTE

- N/A

MPA1 MIX DANTE

- N/A

MPA1 SOLO MAD1

- N/A

MPA1 MIX MAD1

- N/A

RELEASE NOTES



Version 1.2.6

MPA1 SOLO SDI

- SD-SDI formats are displayed with an aspect ratio of 8:3
- SD-SDI formats are not present on the HDMI Output.
- SDI Output connection not supported
- 3G-SDI Level B not supported

MPA1 SOLO DANTE

- N/A

MPA1 MIX DANTE

- N/A

MPA1 SOLO MADI

- N/A

MPA1 MIX MADI

- N/A

Bug Fixes

Version 2.0C

MPA1-SOLO-SDI

- FIXED - Audio metering is not displayed, and audio output muted with some SD-SDI sources
- FIXED - A brief audio disturbance may be heard when switching between SDI Input 1 and SDI Input 2. This is most noticeable when switching between asynchronous SDI sources.
- FIXED - When switching between sources where not all of the audio channels are used the previous sources audio can sometimes be heard in the unused channels.
- FIXED - The audio level meters can sometimes jump +1 Db a few seconds after switching between SDI inputs.

MPA1-MIX-SDI

- FIXED - Audio metering is not displayed, and audio output muted with some SD-SDI sources
- FIXED - A brief audio disturbance may be heard when switching between SDI Input 1 and SDI Input 2. This is most noticeable when switching between asynchronous SDI sources.
- FIXED - When switching between sources where not all of the audio channels are used the previous sources audio can sometimes be heard in the unused channels.
- FIXED - The audio level meters can sometimes jump +1 Db a few seconds after switching between SDI inputs.

MPA1 SOLO 8

- FIXED - The audio level meters can sometimes jump +1 Db a few seconds after changing the AES input.

MPA1 MIX 8

- FIXED - The audio level meters can sometimes jump +1 Db a few seconds after changing the AES input.

RELEASE NOTES



Version 1.29

MPA1-SOLO-SDI

- N/A

MPA1-MIX-SDI

- HDMI and SDI Outputs no longer default to SDI Input 1 when switching between Video and Audio Metering modes on the front panel.

MPA1-SOLO-DANTE

- N/A

MPA1 MIX DANTE

- N/A

MPA1 SOLO MADI

- N/A

MPA1 MIX MADI

- N/A

RELEASE NOTES



Version 1.28

MPA1-SOLO-SDI

- Improved detection to changes in input signal format.
- SDI output is now re-clocked
- Loss of a valid video source now displays as a blue screen on the front panel.

MPA1-SOLO-DANTE

- Manually entered channel names entered via the MPA1-SOLO-DANTE Web Page are now properly reflected on the front panel display.

MPA1 MIX DANTE

- Manually entered channel names entered via the MPA1-MIX-DANTE Web Page are now properly reflected on the front panel display.

MPA1 SOLO MADI

- Manually entered channel names entered via the MPA1-SOLO-MADI Web Page are now properly reflected on the front panel display.

MPA1 MIX MADI

- Manually entered channel names entered via the MPA1-MIX-MADI Web Page are now properly reflected on the front panel display.

RELEASE NOTES



Version 1.27

- MPA1 configurations saved in versions up to and including 1.1.4 could be lost when power cycling units upgraded to 1.2.4.

RELEASE NOTES



Upgrade Procedure for all MPA1 devices.

MPA1 Software updates can be downloaded from the following location:

<http://www.tslproducts.com/product-support/audio-products-support/>

1. Download the MPA1 update file from the TSL Products Website using the link shown above
2. Unzip the contents onto a USB memory stick.
3. Place the USB memory stick into the front panel of the MPA1
4. Hold down Select/Menu on the MPA1 for approximately 3 seconds to reveal the Setting Menu
5. Navigate to the 'USB Load/Save' using the Select/Menu controller and Press to Select.
6. Navigate to 'Update Firmware' using the Select/Menu controller and then Press to Select.
7. You will see the message 'Interpreting Update Image' on the front panel, followed by a progress bar.
8. Once the update is completed you will see the message ***** FILE UPDATE COMPLETE*****, ***Please remove USB stick to restart***.
9. Remove USB memory stick from the front panel of the unit.
10. Unit will now Reboot.

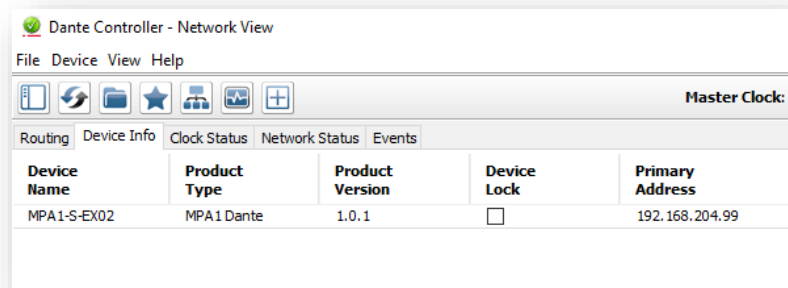
Upgrade Procedure (for DANTE enabled MPA1 devices only)

Having updated your MPA1 Solo Dante and MPA1 Mix Dante devices as detailed above, it may also be necessary to upgrade the MPA1 Solo Dante and MPA1 Mix Dante Firmware to achieve full functionality when used on Dante and AES-67 networks.

DANTE Firmware for use with the MPA1 Solo Dante and MPA1 Mix Dante is available here:

<http://www.tslproducts.com/product-support/audio-products-support/>

1. Download the MPA1 Dante Firmware update file from the TSL Products Website using the link shown above, this will comprise two files.
2. Download the Dante Firmware Update Manager from <https://www.audinate.com/>
3. Using Dante controller, make a note of the 'Primary Address' belonging to the MPA1 Solo Dante or MPA1 Mix Dante device you wish to update.



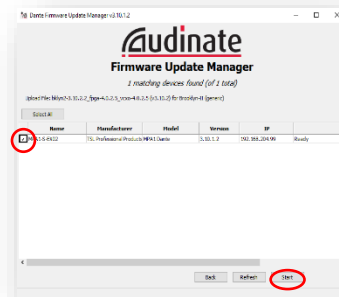
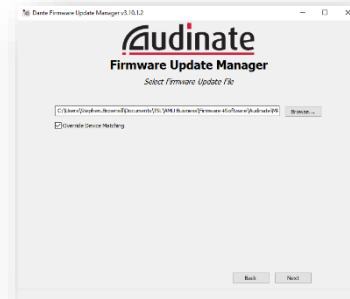
The screenshot shows the 'Dante Controller - Network View' window. It has a menu bar with 'File', 'Device', 'View', and 'Help'. Below the menu bar is a toolbar with icons for home, refresh, folder, star, network, and zoom. The main area has tabs for 'Routing', 'Device Info', 'Clock Status', 'Network Status', and 'Events'. The 'Device Info' tab is active, displaying a table with the following data:

Device Name	Product Type	Product Version	Device Lock	Primary Address
MPA1-S-EX02	MPA1 Dante	1.0.1	<input type="checkbox"/>	192.168.204.99

4. Using Audinate Firmware Update Manager, select the Ethernet Interface on your PC connected to the same network as the 'Primary Address' belonging to the MPA1 Solo Dante or MPA1 Mix Dante device you wish to upgrade.
5. Click 'Next' in the Audinate Firmware Update Manager
6. Click 'Update Dante Firmware' in the Audinate Firmware Manager
7. Browse to the location of the DANTE Firmware update file downloaded from <http://www.tslproducts.com/product-support/audio-products-support/> whose filename takes the form 'bkly2-xxxx_fpga-x.x.x.x.dnt'

Upgrade Procedure (for DANTE enabled MPA1 devices only) contd.

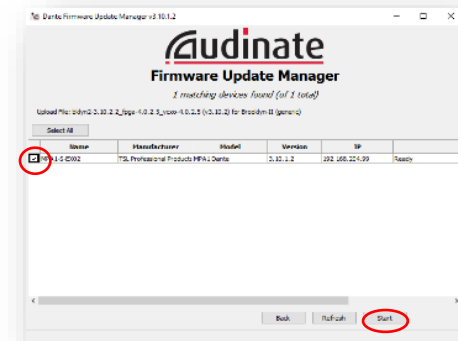
8. Ensure that the 'Override Device Matching' checkbox is checked
9. Click 'Next' in the Audinate Firmware Update Manager
10. Your MPA1 Solo Dante or MPA1 Mix Dante device should now be listed in the Audinate Firmware Manger (see below)
11. Select the checkbox belonging to the MPA1 Solo Dante and/or MPA1 Mix Dante devices you wish to upgrade and click on Start.
12. Wait until the Firmware Update process has completed and reboot your device when instructed by the Audinate Firmware Manager.



13. Now Browse to the location of the DANTE Firmware update file downloaded from <http://www.tslproducts.com/product-support/audio-products-support/> whose filename takes the form 'MPA1.dnt'
14. Click 'Next' in the Audinate Firmware Update Manager
15. Your MPA1 Solo Dante or MPA1 Mix Dante device should now be listed in the Audinate Firmware Manger (see below)
16. Select the checkbox belonging to the MPA1 Solo Dante and/or MPA1 Mix Dante devices you wish to upgrade and click on Start.

RELEASE NOTES

17. Wait until the Firmware Update process has completed and reboot your device when instructed by the Audinate Firmware Manager.



RELEASE NOTES



Technical Support

For technical support, please contact:

<http://www.tslproducts.com/product-support/>