

Connecting GVG LDK & LDX Cameras to TallyMan

Contact TSL Products Support:

E. Support@tslproducts.com

T. +44 (0) 01628 564 610

W. www.tslproducts.com

Version History

Issue	Date	Change Details
1	14/03/18	First Issue

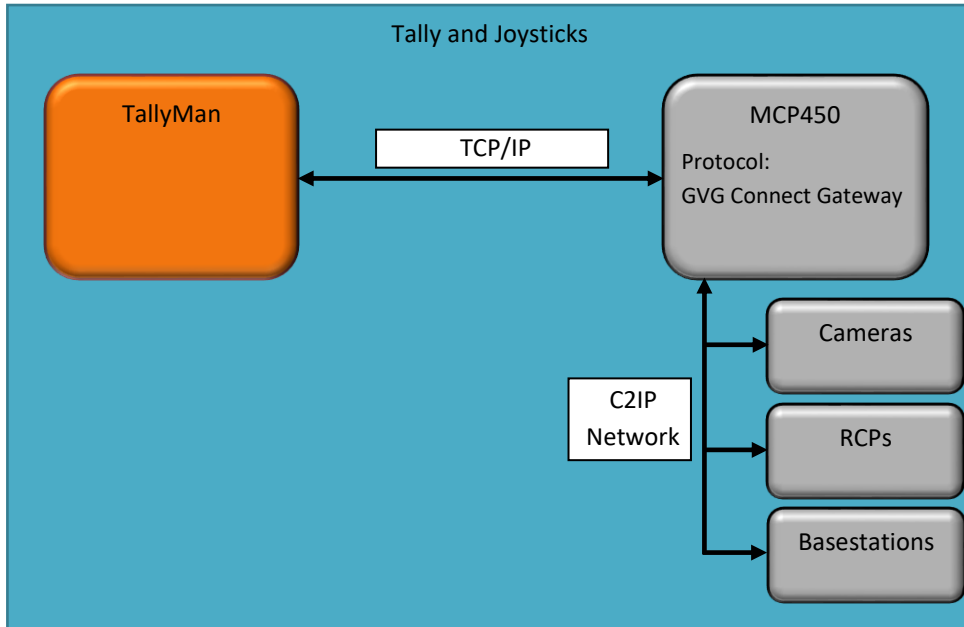
Contents

Overview.....	4
Functions	4
Notes	4
Tally and Crosspoints.....	5
Comms.....	5
1. Screenshots.....	5
2. Detail	6
Instructions.....	7
1. Setting up ethernet control of the camera on the Base-Station.....	7
2. Finding the public IP of the Connect Gateway	8
3. Adding an Event Monitor component to TallyMan system	9
4. Configuring the event monitor properties	10
5. Setting up comms between the TallyMan and the camera	11

Overview

Functions

- Tally: from TallyMan to Cameras
- Joysticks: from RCPs to TallyMan

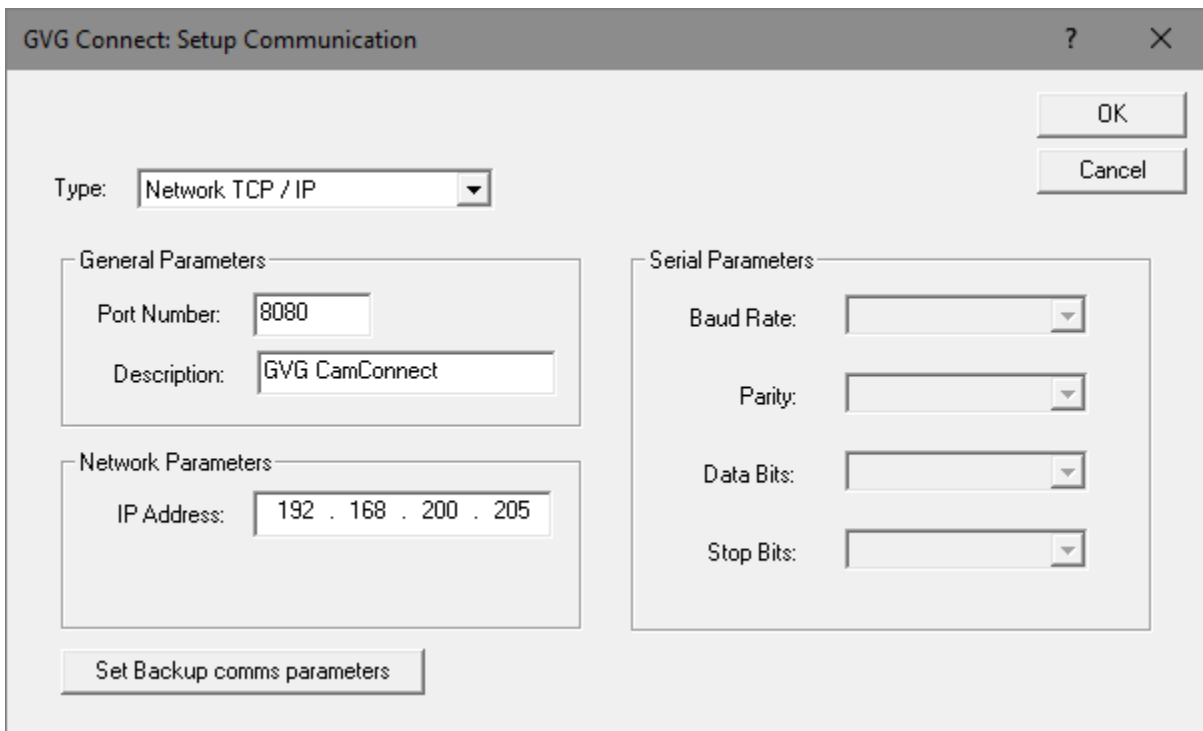
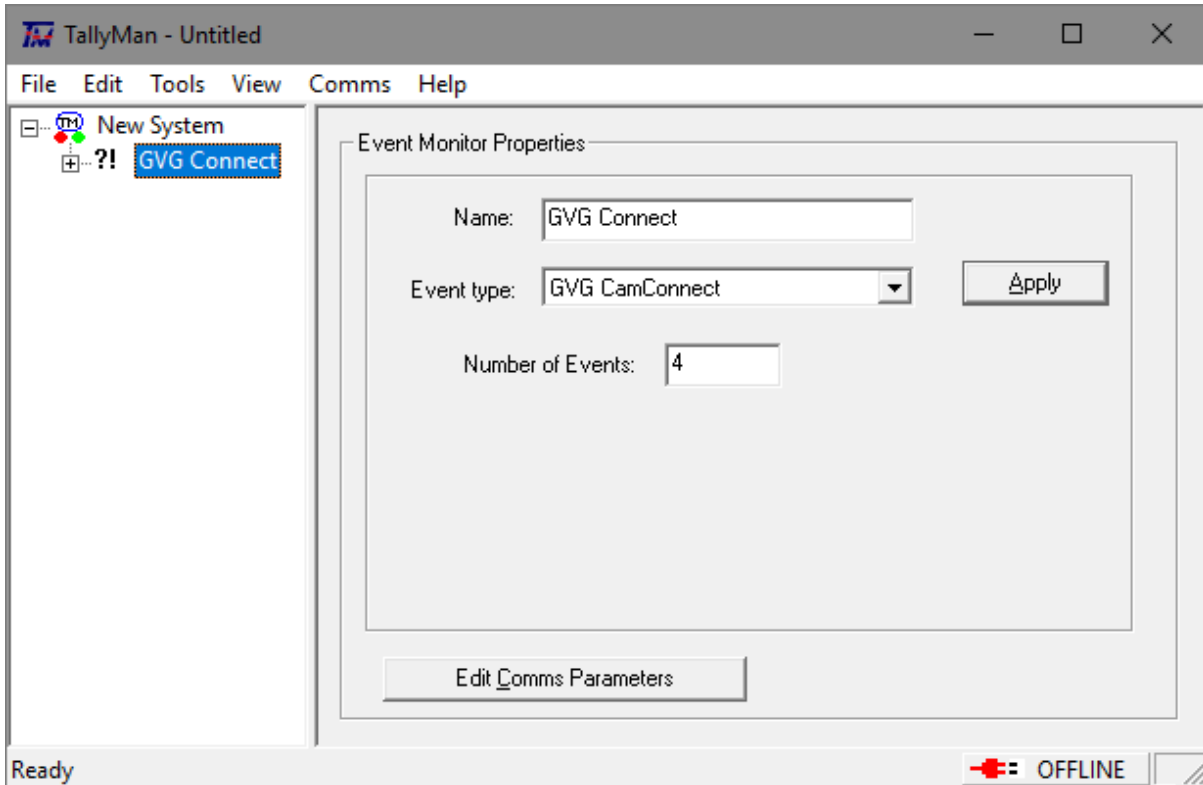


Notes

Tally and Crosspoints

Comms

1. Screenshots



2. Detail

Protocol

- Official protocol name: GVG Connect Gateway
- Protocol name in Device: GVG Connect Gateway
- Protocol name in TallyMan: GVG CamConnect

Connection

- Comms: TCP/IP
- Default Port: 8080
- Component Type in TallyMan: Event Monitor
- Third interface required: GVG MCP 450 (Gateway to C2IP network)

Instructions

Requirements:

Ethernet connection between the TallyMan system and the public port of the MCP450

1. Setting up ethernet control of the camera on the Base-Station

To begin, ethernet control of the camera must be enabled from the menu on the front panel display of the XCU Base-Station. The front panel display will by default appear as below, showing the camera number.



Hold the right arrow for 2 seconds to access the menu screen and then follow the instructions below to navigate the relevant page



Once **'Onair Source'** is selected, use the left and right arrows to choose **'Ethernet'** as the on air source signalling input.

2. Finding the public IP of the Connect Gateway

Access the MCP450 – Video Adjust software, by navigating to ‘MCP System’ you can find the ‘LAN Public’, this is the IP address that the TallyMan will need to use to connect with the Gateway.

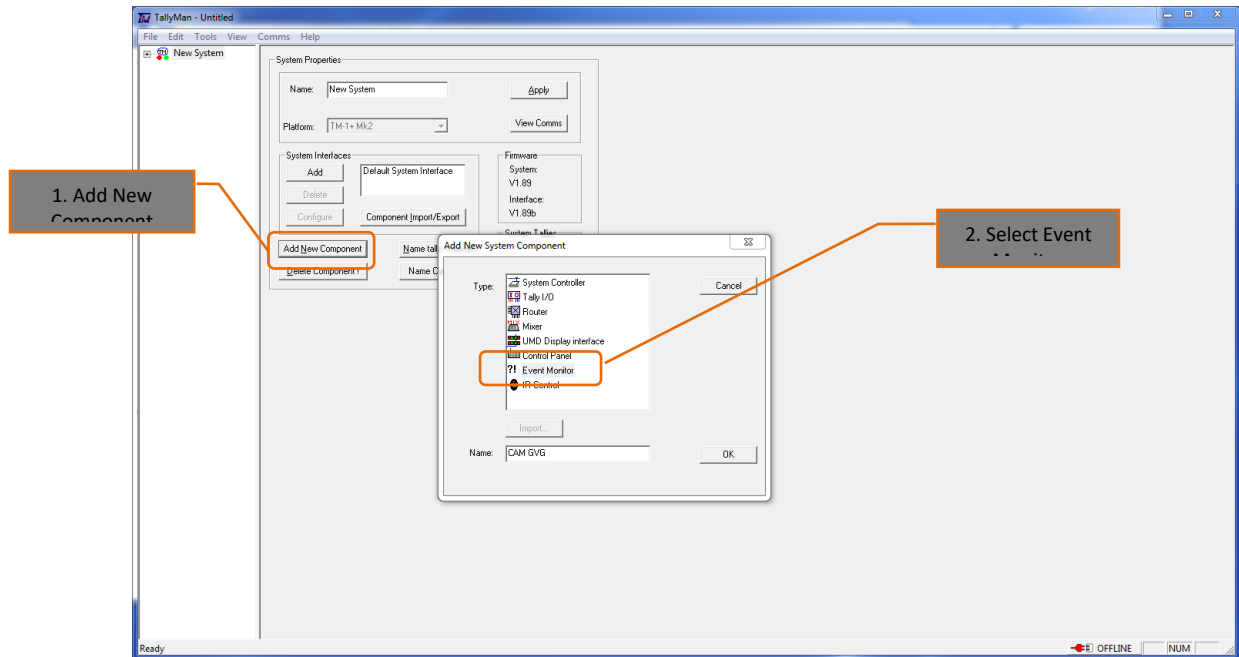
The screenshot shows the MCP450 Video Adjust software interface. The main window displays a table of system parameters. A callout box labeled '1. MCP Page' points to the 'MCP' tab. Another callout box labeled '2. Public IP' points to the 'LAN Public' column, which contains the IP address '192.168.200.236'.

LAN Select	LAN C2IP	LAN Public
		192.168.200.236
NameSrv1	Software Version	1.1.0.0
NameSrv2	HW Model Name	ARK-1122F-S8A1E
OCP	Serial nr.	AECG041027
Camera	PID	ZWDHE
SXP/LLA	NameServer 1	No
Packages	NameServer 2	No
Config	Black Potmeters	BLACK
Licenses	Tally Brightness	Full
Diagnose	Button Illum.	14
Fiber Transm.	Cam/F.Stop Display	50
Preview Button	OnAir On	

3. Adding an Event Monitor component to TallyMan system

To implement sending Tally to the camera through the ethernet connection with the Camera Control Network, there are some specific steps that need to be taken when configuring TallyMan.

Select **'Add New Component'** on the **'System Properties'** home screen, the component type needed is an **'Event Monitor'** and should be given a unique and identifiable name.



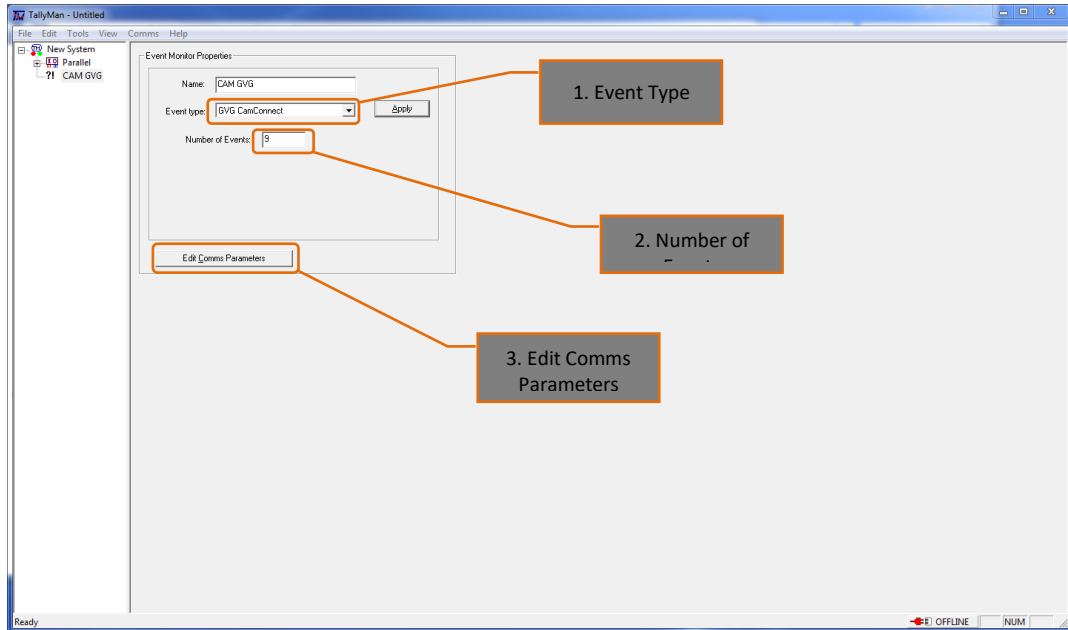
4. Configuring the event monitor properties

Once you have named your event monitor and clicked **'OK'**, you should be able to find the event monitor when you expand the system tree on the left hand side.

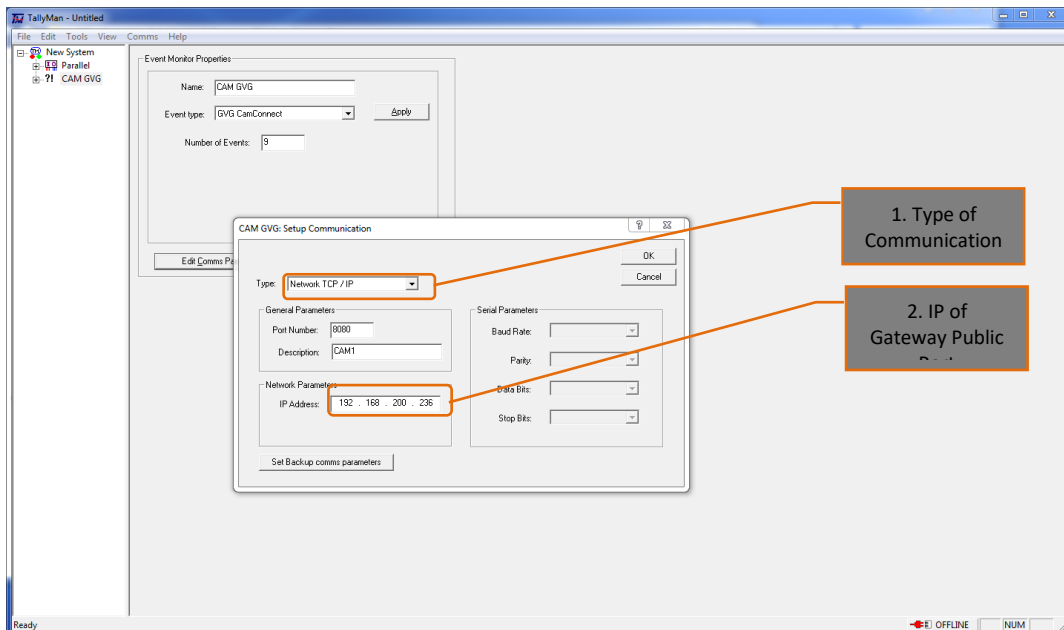
In the **'Event type'** drop down menu select **'GVG CamConnect'** from the list.

The **'Number of Events'** that you choose should be the amount of commands you wish to send to the camera, for instance: Red, Green and Yellow tally commands to one camera would require three events.

Once the event monitor properties have all been configured, click **'Apply'**.



Next click **'Edit Comms Parameters'** to enter the **'Setup Communication'** window.



5. Setting up comms between the TallyMan and the camera

In the **'Type'** field, select **'Network TCP/IP'**,

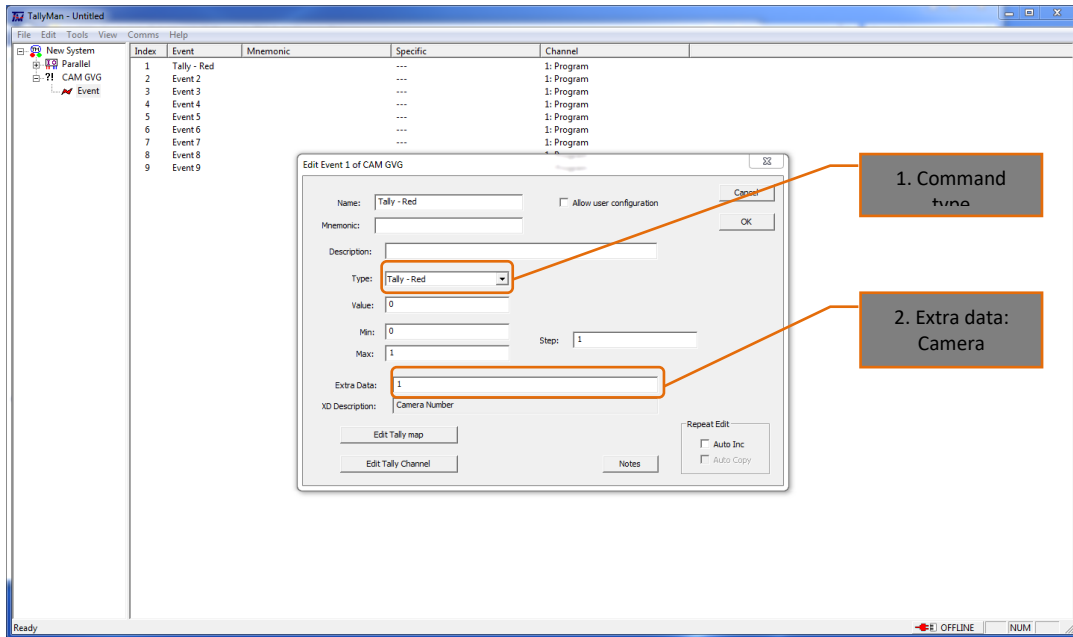
Ensure the Port number is correct and available.

Add a relevant description and enter the IP address of the **'LAN Public'** (see page 3) of the MCP, then click **'OK'**.

After setting up the comms, return to the system tree on the left hand side.

Expand the event monitor and click on the events symbol.

On the events screen, click onto one of the events to enter the **'Edit Event'** window.



By selecting which command you would like to send in the **'Type'** box, most of the fields in the **'Edit Event'** window will auto-populate.

It is then important to state the camera number you would like to communicate with in the **'Extra Data'** field.

The camera number can be easily found and configured on the front panel display of the XCU Base-Station.

Once finished click **'OK'** and move on to editing the other events to fit your requirements.