

TSL Tallyman – Multi controller system

In some situations it may be preferable to create a system with more than one Tallyman controller, for example a fleet of OB trucks will need to communicate tally data between trucks for large events but must still retain their autonomy for smaller events without changing hardware. This can be done by connecting multiple controllers via IP.

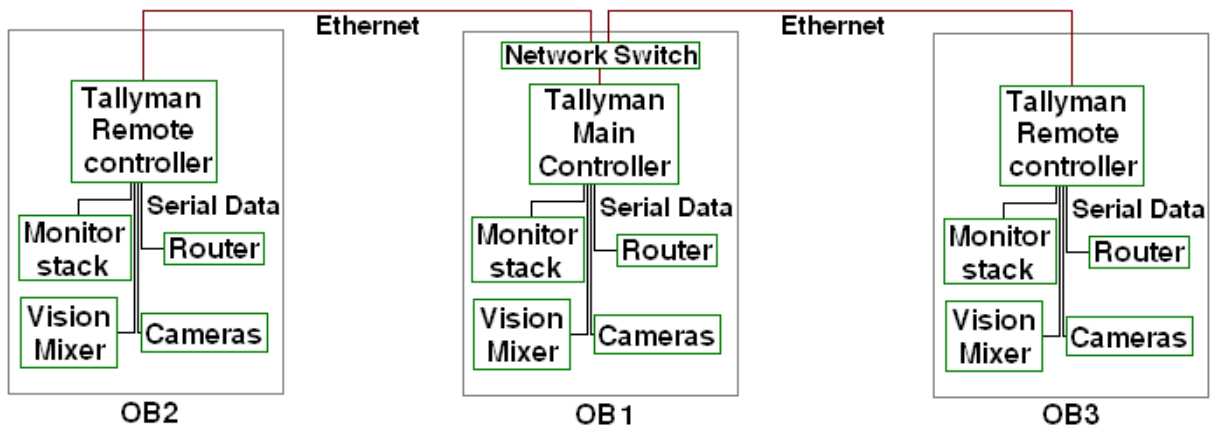


Fig.1 Example of Multi-Controller System

Installation

Connection to the Main controller is via a standard Ethernet CAT 5 cable.

The first Remote Controller unit should be set to:

IP Address: 192.168.100.221

Subnet Mask: 255.255.255.0

Port: 6221

If there is a second Remote Controller the settings will be:

IP Address: 192.168.100.222

Subnet Mask: 255.255.255.0

Port: 6222

NB. Note that the 6000 series numbers for the port setting add the IP address to them.

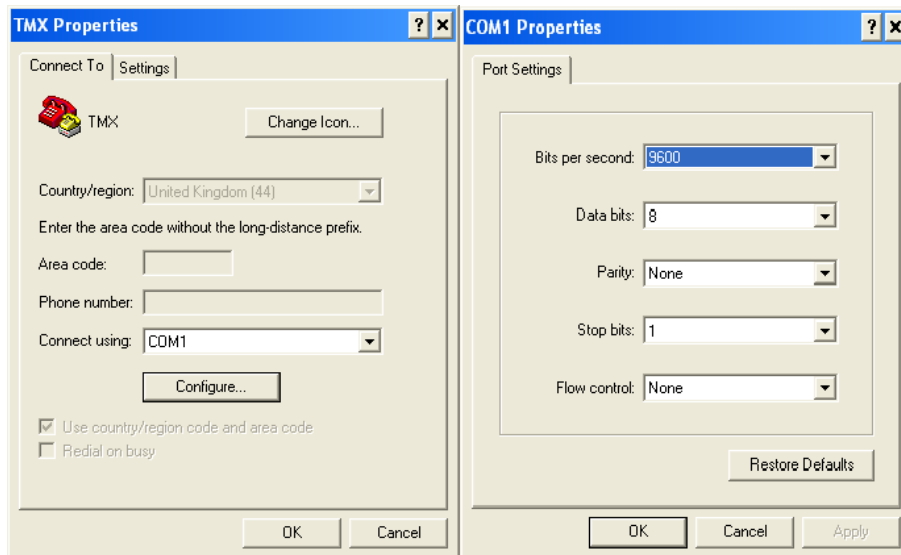
Each successive Remote Controller should increment the IP and port numbers by one.

Setting up the Tallyman remote controllers

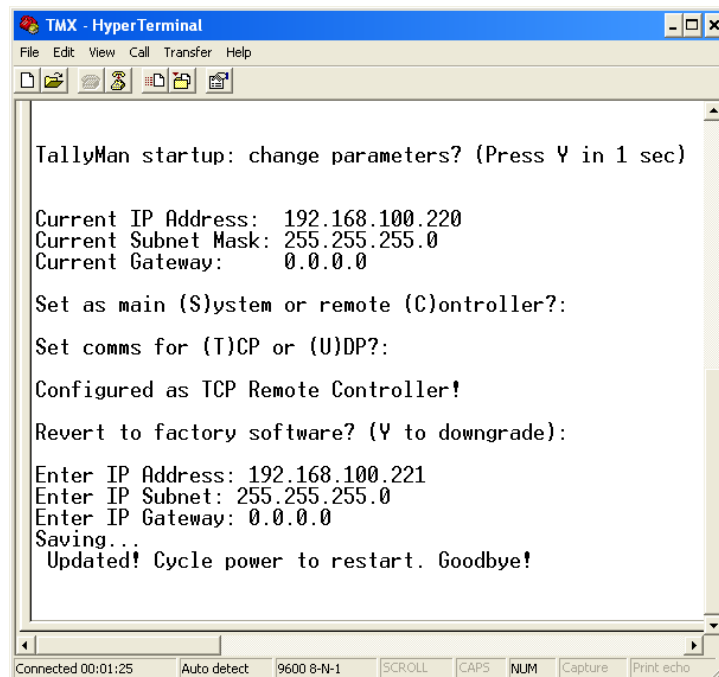
Connect a PC running a terminal program e.g. HyperTerminal or TeraTermPro to the Mtce / Port 3 on the TMx that you wish to act as a Remote Controller using the following cable:

PC - TMx
Pin 2 – Pin 3
Pin 3 – Pin 2
Pin 5 – Pin 5

HyperTerminal settings



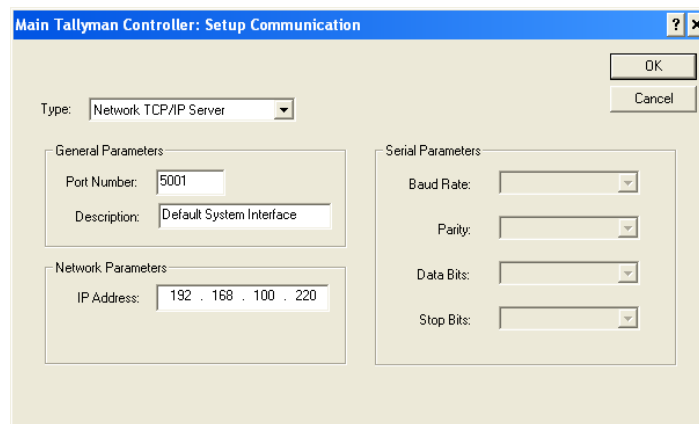
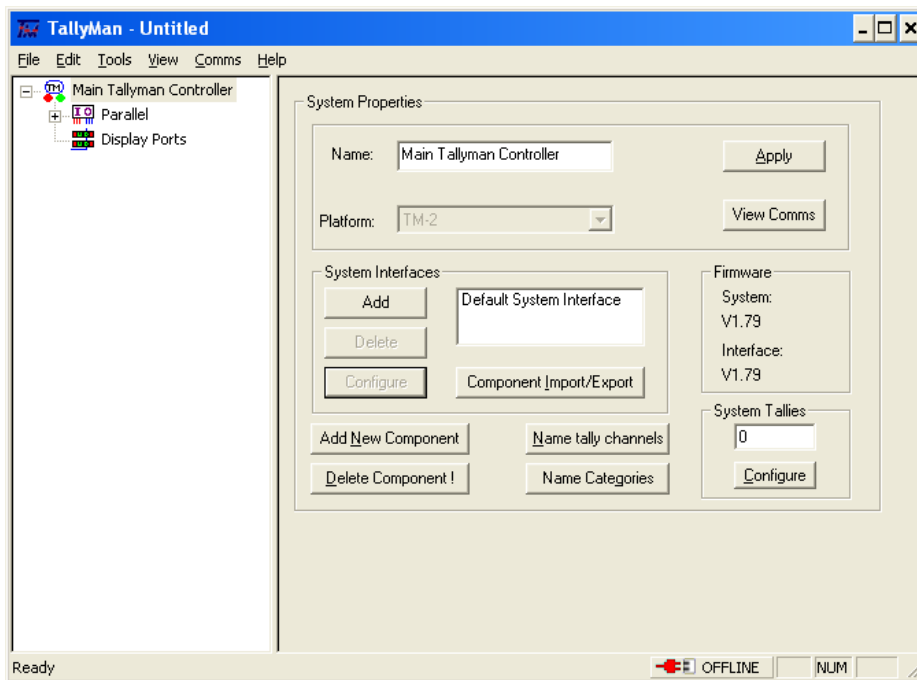
Start HyperTerminal and then power up the TMx and wait for about 10 seconds. Press Y on the keyboard within 1 sec of the message appearing. Follow the on-screen instructions



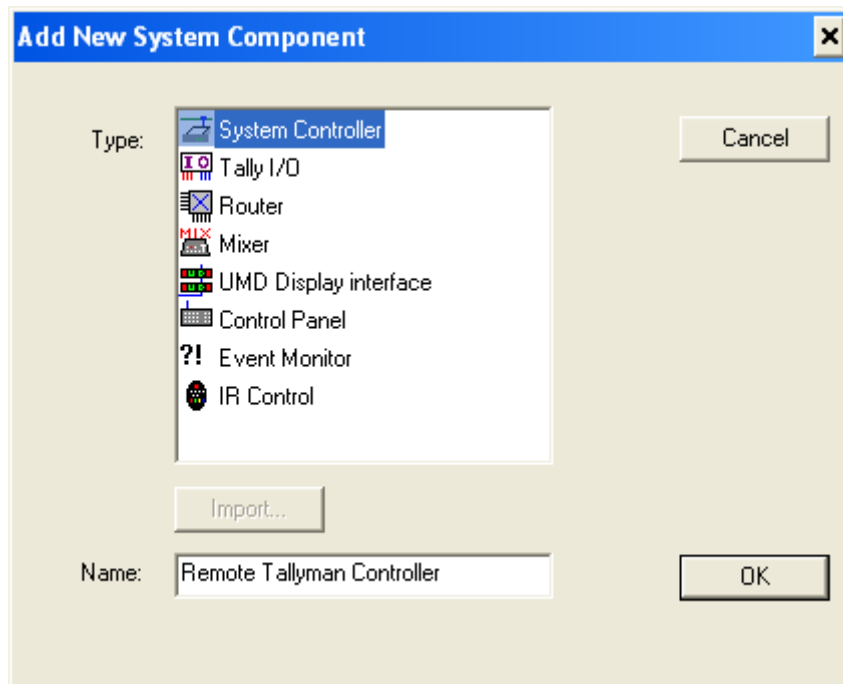
Pressing C will set the TallyMan unit as a Remote Controller so that it may be an Object in the system tree under a Main Controller. Pressing T or U will then set comms to TCP or UDP respectively.

Setting the Tallyman configuration

- Create a new configuration and set the IP of the Main controller.

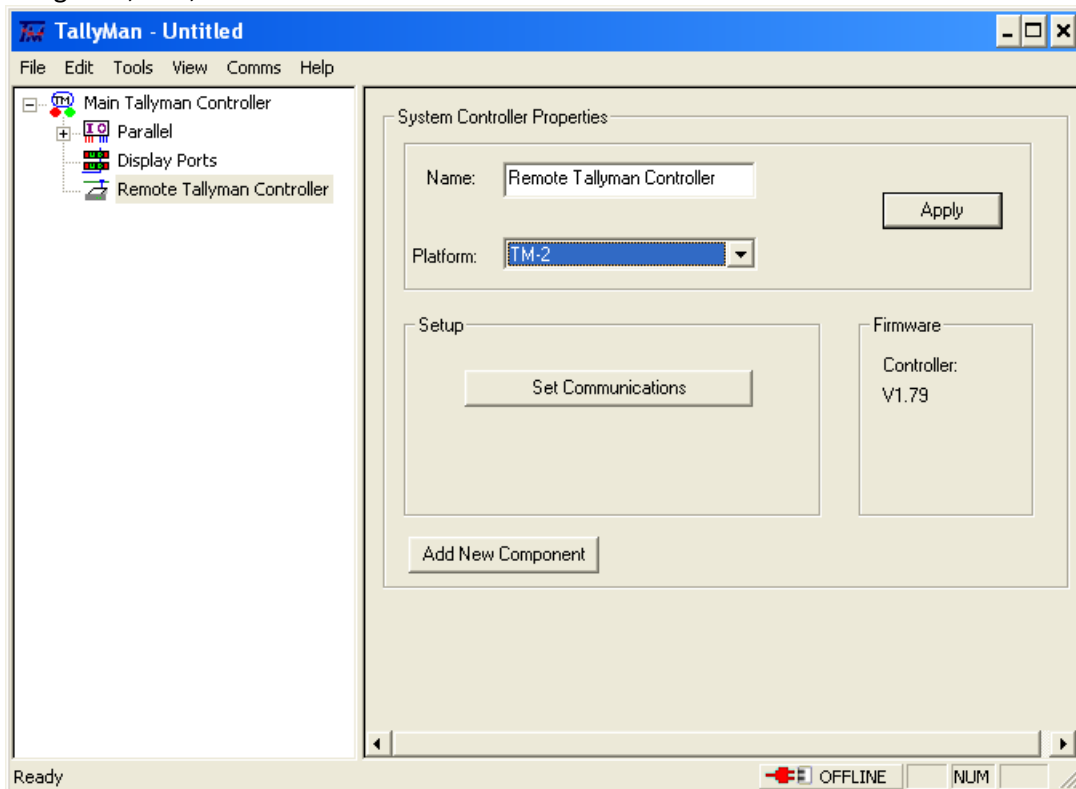


- Add a new System Controller with the “Add New System Component” option

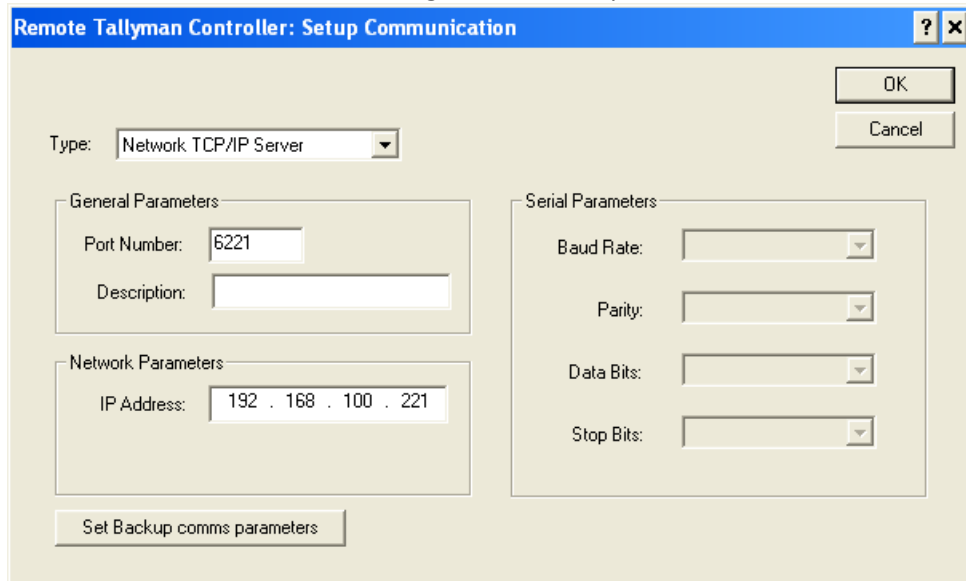


This will then appear in the system tree.

- Select the Remote Controller in the system tree and select the platform from the drop down list e.g TM1, TM2, TM2+.



- Click “Set Communications”, the following window will open.



NB. Ensure that the port number equals 6000 plus the last 3 digits of the IP address.

- New components may then be added in the normal manner by clicking the “Add New Component” button on the controller, ensuring they are added to the controller to which they are directly connected.
- Components on any controller may then be assigned to any other suitable component from any other controller.

Example: Assigning Tally in from a Remote Controller to UMD 1 of the Main controller.

